

# ARDEN P.U.D. PLAT 1

BEING A PARCEL OF LAND, LYING IN SECTIONS 21, 22, 27, 28, 33 AND 34, TOWNSHIP 43 SOUTH, RANGE 40 EAST, PALM BEACH COUNTY, FLORIDA.

SHEET 11 OF 20

42

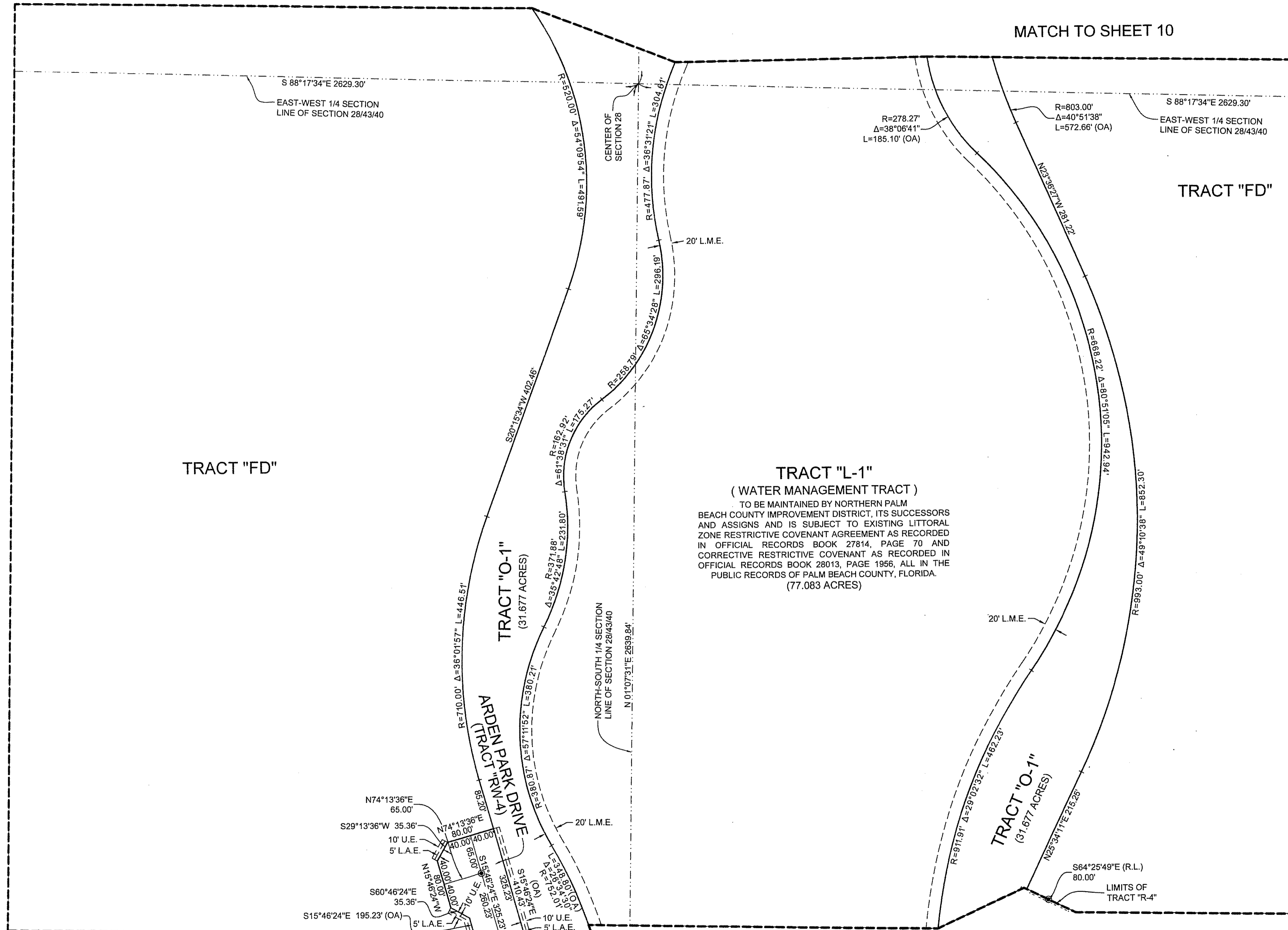
COUNTY OF PALM BEACH )  
STATE OF FLORIDA ) SS  
THIS PLAT WAS FILED FOR RECORD AT \_\_\_\_\_ M. THIS \_\_\_\_\_ DAY OF \_\_\_\_\_ 2016, AND DULY RECORDED IN PLAT BOOK NO. \_\_\_\_\_ ON PAGE \_\_\_\_\_ THRU \_\_\_\_\_  
SHARON R. BOCK,  
CLERK AND COMPTROLLER  
BY: \_\_\_\_\_ D.C.

MATCH TO SHEET 10

MATCH TO SHEET 10

MATCH TO SHEET 6

MATCH TO SHEET 18



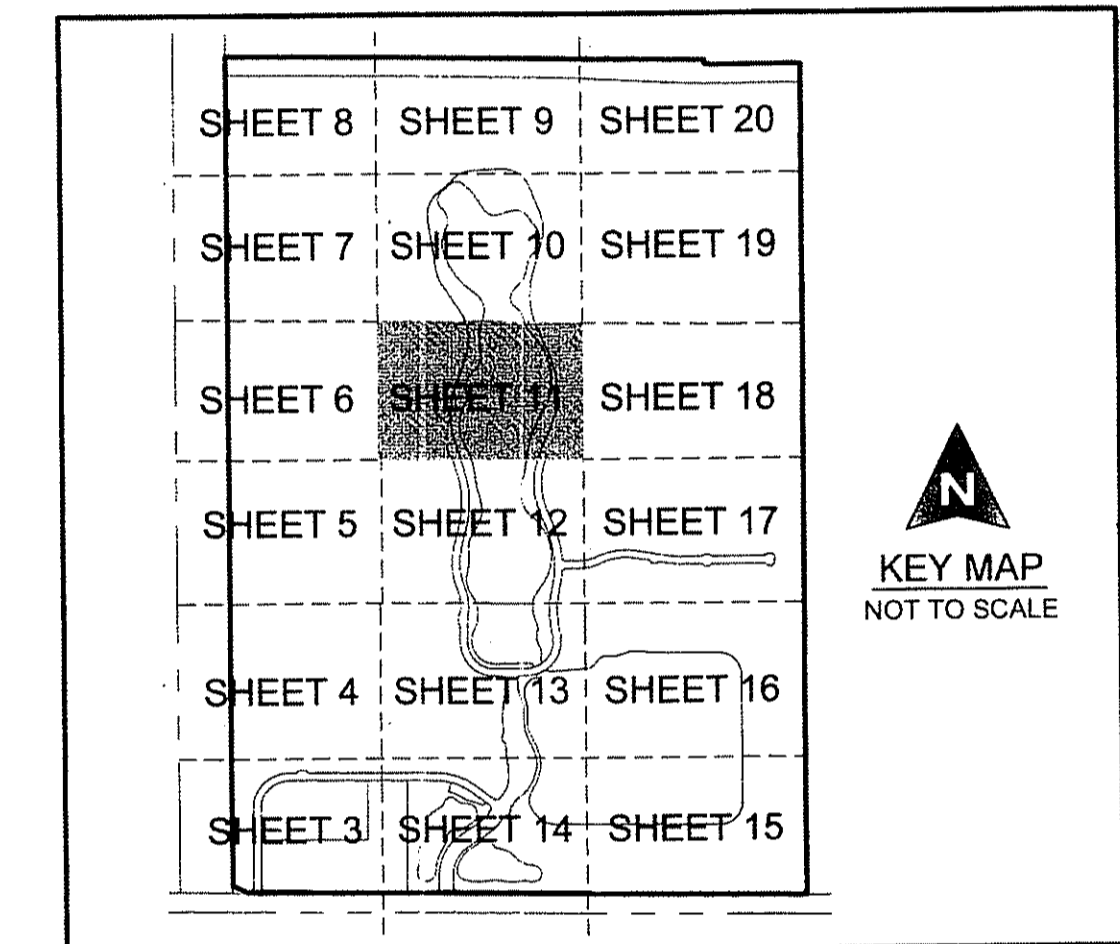
TRACT "FD"

TRACT "FD"

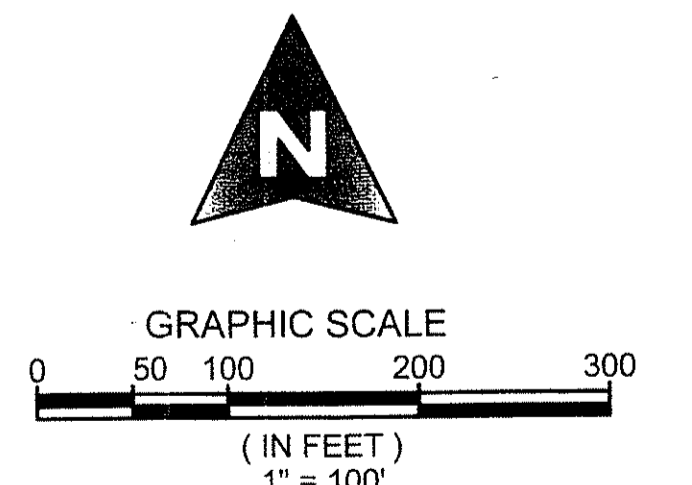
**TRACT "L-1"**  
( WATER MANAGEMENT TRACT )  
TO BE MAINTAINED BY NORTHERN PALM BEACH COUNTY IMPROVEMENT DISTRICT. ITS SUCCESSORS AND ASSIGNS AND IS SUBJECT TO EXISTING LITTORAL ZONE RESTRICTIVE COVENANT AGREEMENT AS RECORDED IN OFFICIAL RECORDS BOOK 27814, PAGE 70 AND CORRECTIVE RESTRICTIVE COVENANT AS RECORDED IN OFFICIAL RECORDS BOOK 28013, PAGE 1956, ALL IN THE PUBLIC RECORDS OF PALM BEACH COUNTY, FLORIDA. (77.083 ACRES)

TRACT "O-1"  
(31.677 ACRES)

TRACT "O-1'"  
(31.677 ACRES)

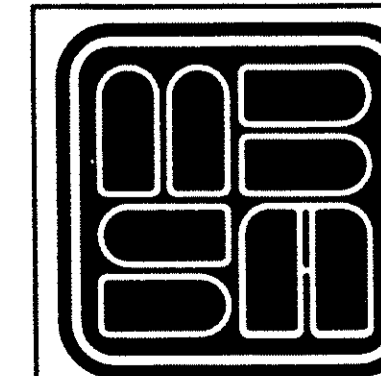


COORDINATE NOTE:  
STATE PLANE COORDINATES SHOWN ARE GRID DATUM, NAD 83 1990 ADJUSTMENT, FLORIDA EAST ZONE, COORDINATE SYSTEM 1983 STATE PLANE, TRANSVERSE MERCATOR PROJECTION  
LINEAR UNIT = US SURVEY FEET  
ALL DISTANCES ARE GROUND  
SCALE FACTOR = 0.99999219  
GROUND DISTANCE X SCALE FACTOR = GRID DISTANCE  
BEARINGS AS SHOWN HEREON ARE GRID DATUM, NAD 83 1990 ADJUSTMENT, FLORIDA EAST ZONE.



MATCH TO SHEET 12

MATCH TO SHEET 12



**MICHAEL B. SCHORAH & ASSOCIATES, INC.**  
1850 FOREST HILL BLVD., SUITE 206  
WEST PALM BEACH, FLORIDA 33406  
EB# 2438 TEL. (561) 968-0080 FAX. (561) 642-9726 LB# 2438